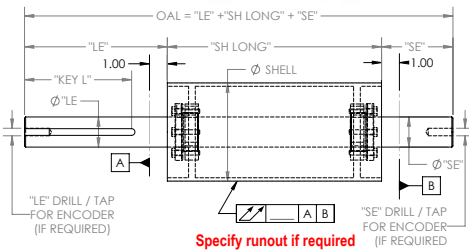


## Drive Pulley - Plain

Customer Specification / Order / Quote Form

### Standard Features

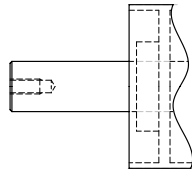
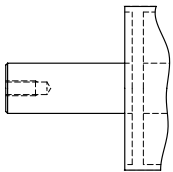
- Material: All steel construction
- Plain washer end plate, set screw hub, QD style hub and bushing set recessed .250 from end of shell
- Standard keyway and standard tolerances (per ANSI B17, 1-1967, R1989)



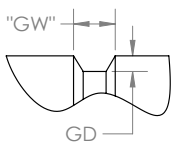
### Additional Options

Plain Washer

Hub and Set Screw



Center "V" Groove



### Additional Notes:

Company: \_\_\_\_\_

Email: \_\_\_\_\_

Contact Name: \_\_\_\_\_

Date Required: \_\_\_\_\_

Contact Number: \_\_\_\_\_

Quantity: \_\_\_\_\_

### Customer Specifications

Customer Part# \_\_\_\_\_

"LE" \_\_\_\_\_

"Ø LE" \_\_\_\_\_

"KEY L" \_\_\_\_\_

"SH LONG" \_\_\_\_\_

"Ø SHELL" \_\_\_\_\_

"FLAT" \_\_\_\_\_ TRAP CROWN \_\_\_\_\_

"SE" \_\_\_\_\_

"Ø SE" \_\_\_\_\_

"LE DRILL/TAP" \_\_\_\_\_

"SE DRILL/TAP" \_\_\_\_\_

"GW" \_\_\_\_\_ "GD" \_\_\_\_\_